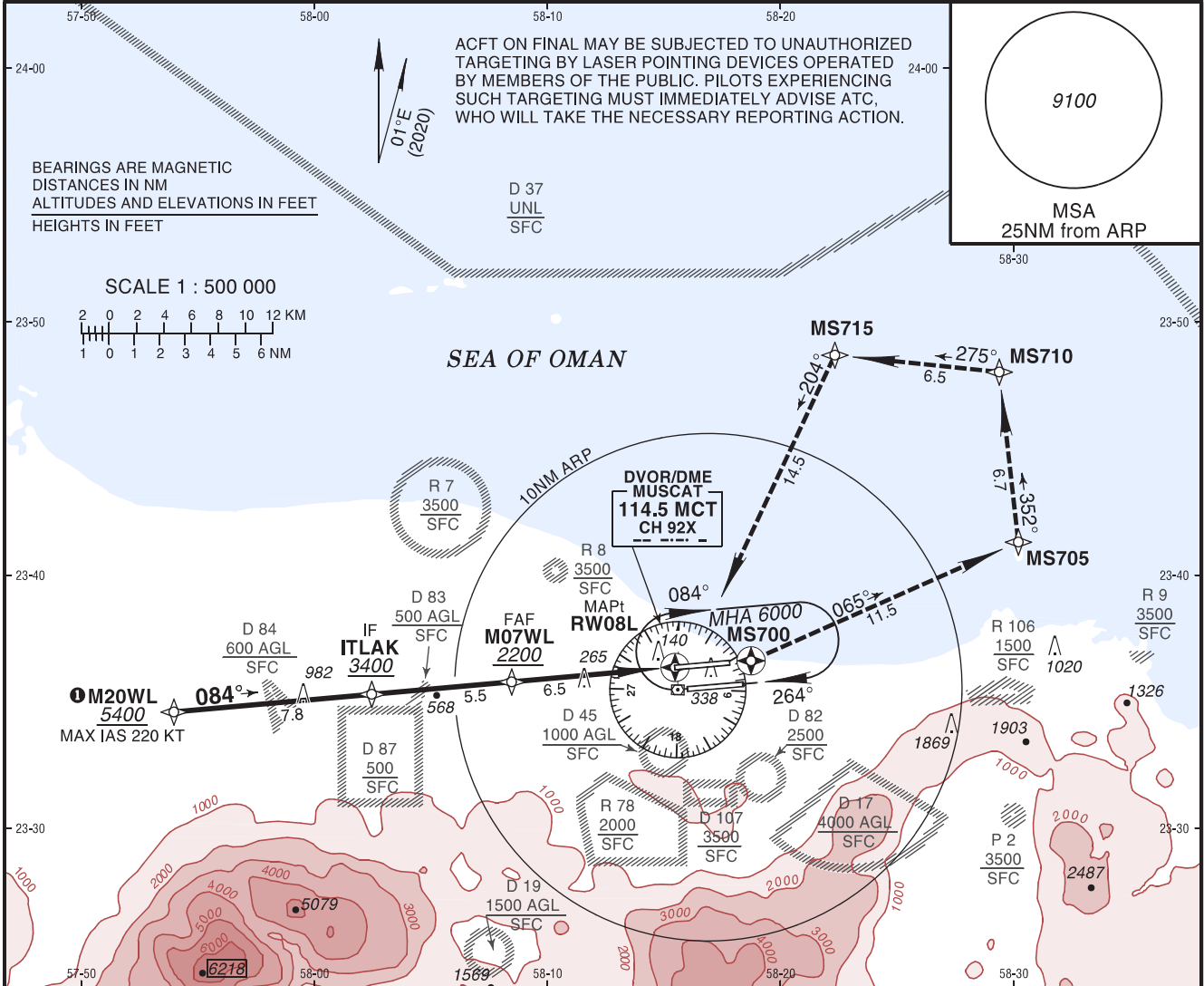


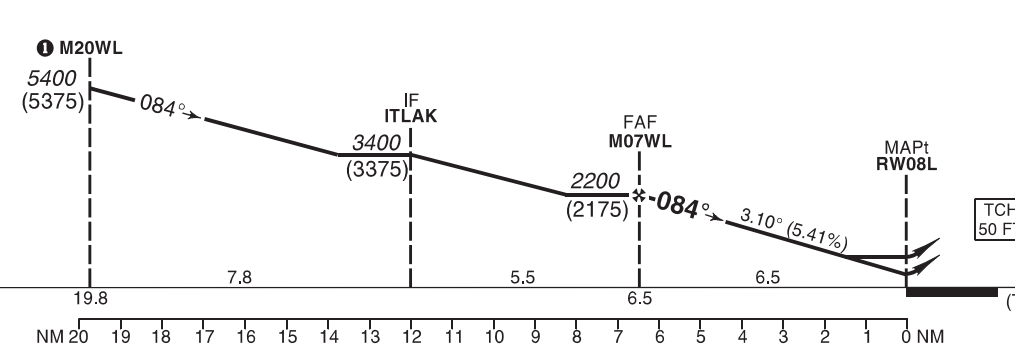
**INSTRUMENT APPROACH CHART - ICAO**  
**AD ELEV 49 FT**  
 HEIGHTS RELATED TO THR RWY 08L ELEV 25 FT

ATIS	126.800
TWR	118.825
APP/RAD	121.200
GND	121.800

**MUSCAT/Muscat Intl OMAN**  
 RNP RWY 08L



**TA 1300**



**MISSED APPROACH:**  
 Climb on runway heading to MS700, turn LEFT to MS705, turn LEFT to MS710, turn LEFT to MS715, turn LEFT to MCT VOR at or above 6000 and join the holding and wait for ATC instructions.  
 MAX IAS 220 KT.

STRAIGHT-IN APPROACH		A	B	C	D	ADVISORY INFORMATION ONLY							
LNAV/VNAV	OCH	270	280	300	320	NM to RW08L	6	5	4	3	2	1	
	DA(H)	290 (270)	300 (280)	320 (300)	340 (320)	ALT	2050	1720	1390	1070	740	410	
	RVR	750m				(HGT)	(2030)	(1700)	(1370)	(1040)	(710)	(380)	
LNAV	OCH	560				GS	kt	80	100	120	140	160	180
	MDA(H)	580 (560)				FAF-MAPt	min:s						
	RVR	1500m		1800m		ROD: 5.41%	ft/min	438	548	657	767	876	986
CIRCLING (HAA)* ②		A	B	C	D	Not Authorized							

① For INITIAL APPROACH to M20WL see Transition Chart.  
 ② Circling not authorized.  
 ③ Timing not authorized for defining the MAPt.

RNP Approach required.  
 LNAV/VNAV Temperature: Min -15°C  
 Max 50°C

**Holding Instruction/Areas RNP RWY 08L**

Path descriptor	Fix identifier	Inbound course M (T)	Leg Distance	Turn direction	Minimum altitude	Maximum altitude	Speed	Magnetic variation	Navigation performance
Hold	MCT VOR	264° (265.0°)	1 MIN	R	6000			1.4°E	

**Route Description: RNP RWY 08L**

Path descriptor	Fix identifier	Flyover	Course Magnetic (True)	Turn direction	Altitude	Speed limit	Magnetic variation	Distance	Navigation performance
IF	M20WL				+5400	220 KT	1.4°E		RNP APCH
TF	ITLAK		084° (084.9°)		+3400		1.4°E	7.8	RNP APCH
TF	M07WL		084° (084.9°)		+2200		1.4°E	5.5	RNP APCH
TF	<u>RW08L</u>	Y	084° (085.0°)		+75		1.4°E	6.5	RNP APCH

**MISSED APPROACH**

CF	<u>MS700</u>	Y	084° (085.0°)			220 KT	1.4°E		RNP APCH
TF	MS705		065° (060.0°)	L		220 KT	1.4°E	11.5	RNP APCH
TF	MS710		352° (353.6°)	L		220 KT	1.4°E	6.7	RNP APCH
TF	MS715		275° (275.9°)	L		220 KT	1.4°E	6.5	RNP APCH
TF	MCT VOR		204° (205.1°)	L	+6000	220 KT	1.4°E	14.5	RNP APCH
HM	MCT VOR		264° (265.0°)	R	+6000		1.4°E	1 min	RNP APCH

**Aeronautical Data Tabulation: RNP RWY 08L**

Waypoint / Fix	Latitude	Longitude	Latitude (MIN)	Longitude (MIN)	Notes
M20WL	N23°34'35.91"	E057°53'58.73"	N23°34.599'	E057°53.979'	
ITLAK (IF)	N23°35'17.84"	E058°02'27.82"	N23°35.297'	E058°02.464'	
M07WL (FAF)	N23°35'47.24"	E058°08'27.82"	N23°35.787'	E058°08.464'	
RW08L (MAPT)	N23°36'21.27"	E058°15'28.69"	N23°36.355'	E058°15.478'	
MS700	N23°36'36.95"	E058°18'43.93"	N23°36.616'	E058°18.732'	
MS705	N23°41'18.51"	E058°30'12.43"	N23°41.309'	E058°30.207'	
MS710	N23°48'01.27"	E058°29'23.08"	N23°48.021'	E058°29.385'	
MS715	N23°48'41.35"	E058°22'19.98"	N23°48.689'	E058°22.333'	
MCT VOR	N23°35'28.04"	E058°15'36.48"	N23°35.474'	E058°15.607'	

Non precision final approach 3.10° (5.41%).